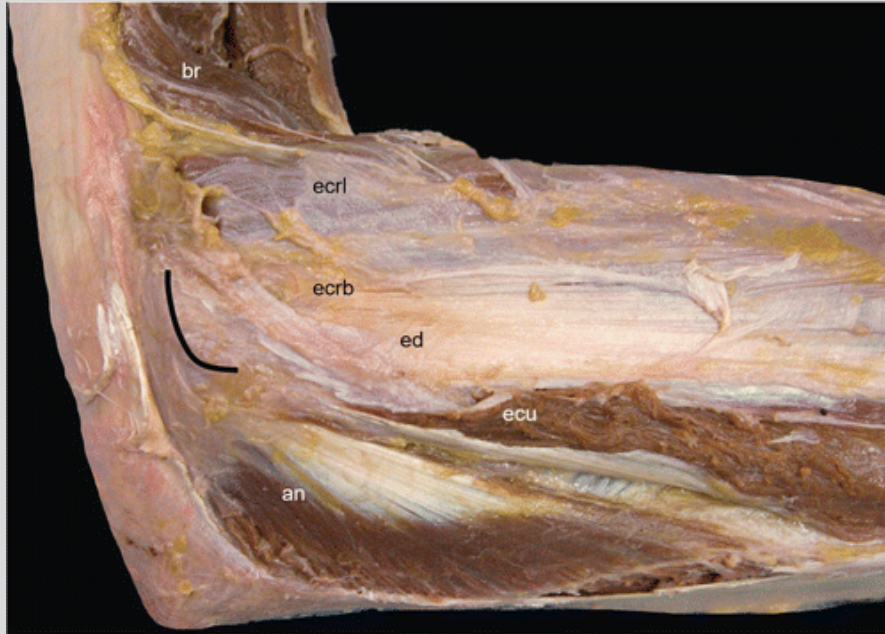


XXIII. SONOANATOMY COURSE

ELBOW ANATOMY AND INTERVENTIONAL SONOGRAPHY



INSTITUTE OF ANATOMY - UNIVERSITY OF BASEL
PESTALOZZISTRASSE 20
4056 BASEL, SWITZERLAND

08.02.2024
16.30 – 18.30

SGUM/SSUM TBD CREDITS
SGR/SSR TBD CREDITS
SSIPM TBD CREDITS



PROGRAM

16:15 REGISTRATION

16:30 - 17.30 ANATOMY DEMO

TOPICS:

- ELBOW JOINT, ALL PARTS
- LIGAMENTS, INCLUDING LUCL; RCL; ANNULAR LIGAMENT, UCL, ALL PARTS
- DISTAL BICEPS TENDONS > BOTH PARTS ([HTTPS://PUBMED.NCBI.NLM.NIH.GOV/32609973/](https://pubmed.ncbi.nlm.nih.gov/32609973/))
- BICIPITARADIAL BURSA
- DIFFERENTIATED VISUALIZATION OF EACH INDIVIDUAL ORIGIN OF THE TENDONS/MUSCLES Laterally and Medially at the respective Epicondyles
- NERVES, INCLUDING RADIAL, MEDIAN, ULNAR AND ALL BRANCHES THEREOF
- CUBITAL TUNNEL
- FASCIAE

17:30 INTERVENTIONAL ULTRASOUND - DIAGNOSTIC SCANNING

18:30 END OF COURSE

Course Information

The number of places is limited (8 participants)

Language: German

Level: Advanced